



G R O U P  
ARCHITECTS (P) LTD

# ARCHITECTS & CONSULTING ENGINEERS



A Little About

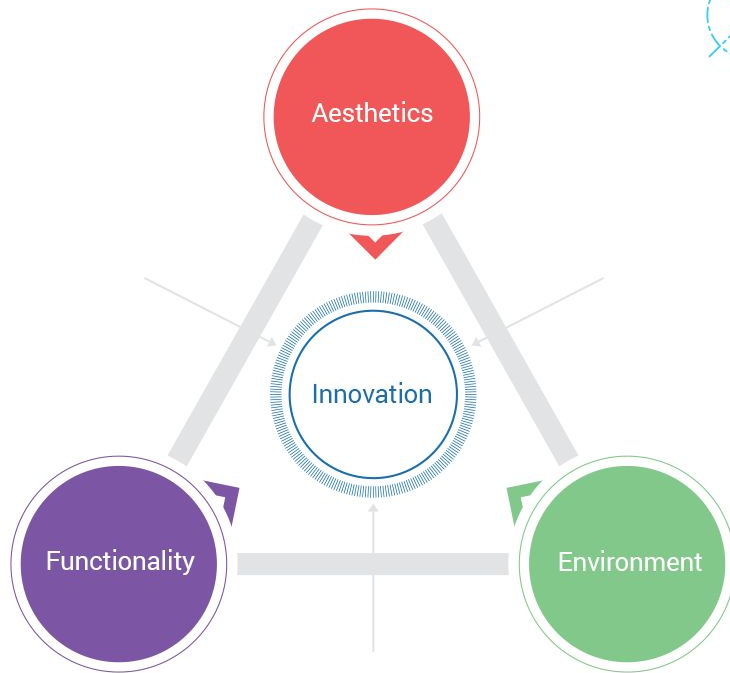
**ACE Group started in 1984**, is a leading architectural and interior consultancy company based in Bengaluru.

- ▶ ACE Group is a multi-disciplinary practice, with portfolio of work which covers prestigious projects in Educational, Residential, Commercial and Industrial segments.
- ▶ ACE Group is recognized as one among the finest architecture firms in the educational segment in India.
- ▶ In the educational segment ACE Group has won International, National and Regional awards, endorsing the group's specialisation in this segment.
- ▶ Some of the leading projects by ACE Group have achieved Platinum and Gold rating from environmental accreditation agencies LEED and IGBC.
- ▶ ACE Group has completed 70 schools, 8 engineering colleges and 2 universities.
- ▶ ACE Group has over 40 very talented and passionate team members, who are fuelling innovation and ingenuity in designs and functionality of projects.



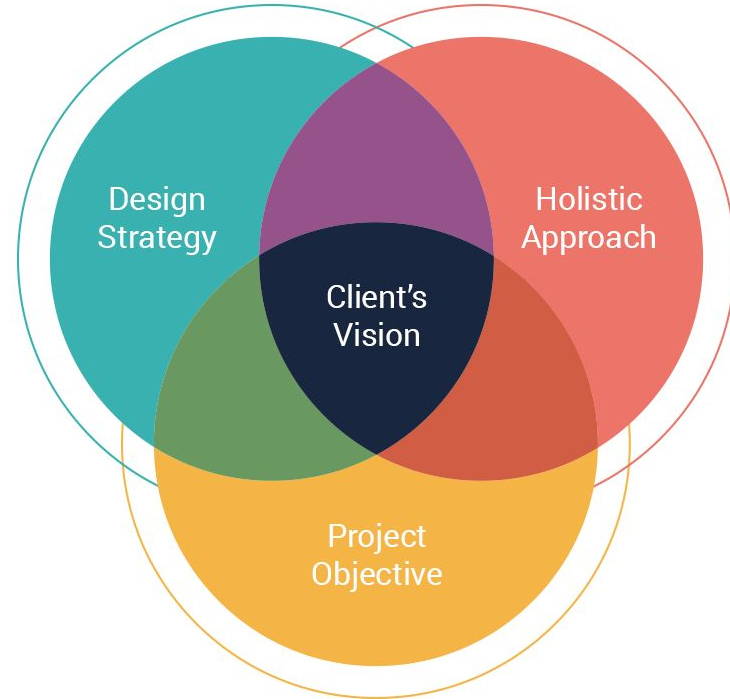
# Philosophy

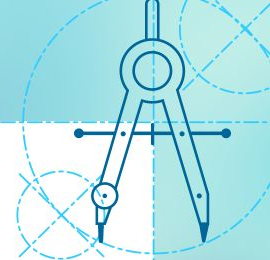
The aspirations of clients can be met by inspiring people to get a right mix of **innovation in Aesthetics, Functionality** and **Environmental** aspects of project.



# Strengths

ACE Group's strength lies in its ability to bring client's vision to reality by adopting a **holistic approach** & **innovative design strategy**.





# Approach

ACE Group's approach to any project is well documented and applied to all the projects undertaken.



# PEOPLE

A team of over 40 people, work in an environment which encourages Ingenuity, Innovation and Collaboration among team members.

## LEADERSHIP

**DINESH VERMA**

FOUNDING PARTNER & PRINCIPAL ARCHITECT

**AKSHARA VERMA**

PARTNER; ARCHITECT & BUSINESS DEVELOPMENT

## ADMINISTRATION

**THOMAS THANGAM**

HEAD OF FINANCE

**MARLIN MARY**

HEAD OF HR

**GEETHA BHALLA**

ADMINISTRATOR

## PROJECT ENGINEERING & COORDINATION

**VINAY CHANDRA**

PROJECT DIRECTOR

**SANTHOSH R.**

PROJECT DIRECTOR

## DESIGN LEADERSHIP

**ASWINI BAGAL**

ASSOCIATE ARCHITECT

**RAJESH NARANG**

ASSOCIATE ARCHITECT

**PRANITHA SUNKU**

LEAD ARCHITECT

**KUNAL KASHYAP N.**

LEAD ARCHITECT

**CHETHAN L.**

INTERIOR LEAD



**DINESH VERMA**  
( B.Arch. M.Des - IIT-B, FIIA)

Founding Partner &  
Principal Architect



**Dinesh Verma** B.ARCH from REC-Nagpur University  
M.DES from IIT-Mumbai.

He has over 3 decades of industry experience in Master Planning, Architecture and Interior Design.

His leadership skills have been instrumental in completing over 160 successful projects; including almost 90 educational environments.

He is an active member of various professional organizations and has held the following prominent positions:

**President : Designers Guild of India 1995 - 1997**

**President: Practising Architects Association 2002 - 2004**

**Managing Editor: Antarya Magazine 2012 - Present**

**Chairman: IIID - BRC 2019- Present**

## CITATION

**RASHI - DINESH VERMA GREEN BUILDING AWARD**

An annual award instituted by the Rotary Club of Bengaluru South & the Indian Institute of Architects - Karnataka Chapter



**AKSHARA VERMA**  
*(B.Arch. M.Sc (Arch), AIIA)*

Partner & Director – Research  
& Business Development

**Akshara Verma** B.ARCH from RV College of Architecture, Bangalore and M.SC from The Berlage, TU Delft, Netherlands.

She was conferred with a cum-laude distinction for her post graduate thesis in 2015. Her undergraduate project also received acclaim among the top 10 thesis projects in the country by COA-NIASA in 2011.

She is a twice recipient of the SSTC Scholarship, Amsterdam.

She was design head with Studio Spomenik for an interactive installation at the International Architecture Biennale, Rotterdam (IABR) in 2016. Her work has been exhibited at the Festival de Keuze, Rotterdam, UABB Shenzhen and Kala Ghoda Arts Festival, Mumbai

She is faculty at the CMR University School of Architecture.



## AWARDS & RECOGNITION

**ACE'S PROJECTS**, which have received numerous accolades, bear testimony to the company's dynamism and dedication in the field of architectural design and construction. Some of our recent awards

### **DESIGN FIRM OF THE YEAR 2021, INDIA**

For Institutional & Commercial Projects

### **CONSTRUCTION WEEKLY AWARD FOR ARCHITECTURE, 2019**

For Greenwood High School - Campus Plan, Bangalore, India

### **ZAK AWARD FOR EXCELLENCE IN FAÇADE & FENESTRATION, 2018**

For Spectra Convention Centre, Mysuru, India.

### **ZAK AWARD FOR EXCELLENCE IN FAÇADE & FENESTRATION, 2017**

For ACE's work at Y- The Boutique Hotel, Mysuru, India.

### **ARCHITECT FOR INNOVATIVE DESIGN, 2015**

Conferred the Berg Award for Real Estate, Singapore for The Red Bridge International Academy, Bangalore, India.

### **SOCIAL ARCHITECT OF THE YEAR. 2009**

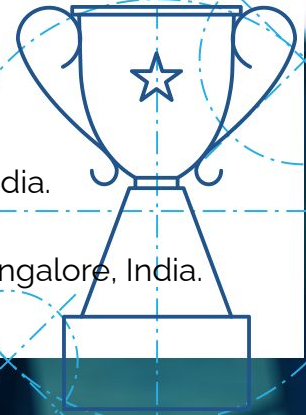
For ACE's work at Dhruva Academy in Sangamner, India.

### **OUTSTANDING STRUCTURE IN CONCRETE, 2008**

Concrete Institute for the India International School in Jaipur, India.

### **ARCHITECT OF THE YEAR, 2005**

For the Design and execution of Indus International School, Bangalore, India.



# ORGANISATION STRUCTURE



Architecture

Structure

Interiors

Environmental Planning

Project Management

Acoustics

Landscaping

Power Planning & Auditing

Fire fighting Planning & Designing

Water supply & Sewage Management

Public Health Engineering



## EXPERTISE

### **ACE GROUP AVERAGES 5 EDUCATIONAL INSTITUTIONS A YEAR.**

OUR LARGEST INSTITUTION IS OF 15 MILLION SQ FT BUILT UP AREA ON 100 ACRES OF LAND.

### **IN 2020 - 2021, ACE GROUP IS WORKING ON 13 EDUCATIONAL PROJECTS ACROSS 8 DIFFERENT CITIES IN INDIA.**

ACE IS PRESENTLY DELIVERING MAJOR PROJECTS IN SHILLONG, GUWAHATI, BRAHMAPUR, PUNE, BELGAUM, TIRUPATHI, COIMBATORE & BANGALORE.

### **ACE GROUP HAS COMPLETED**

# **82 schools, 15 specialised campuses, 9 engineering colleges & 2 universities.**

OUR DESIGN ENDEAVOUR, IN EVERY PROJECT, IS TO GIVE BOTH THE EDUCATORS & LEARNERS 'A SENSE OF PLACE' & A 'SENSE OF BEING' IN THEIR LEARNING ENVIRONMENTS.



## TECHNOLOGIES

Technologies &  
tools used in  
ACE Group.



AUTODESK®  
REVIT®



AUTOCAD



AUTODESK®  
3DS MAX®



SketchUp



Adobe  
Photoshop



Adobe  
Illustrator



Adobe  
InDesign

## TESTIMONY

Team at ACE Group is Positive, Cost effective and Prompt in execution. They are reliable partners and can be depended upon to adhere to quality and deadlines.

*Lt. Gen(Retd) Arjun Ray, PVSM, VSM. Chief Executive , Indus Trust.*

M/s ACE Group have the technological expertise required to Design, Develop and Deliver mega projects. The project management skills are also commendable. Their concern for sustainable development and aesthetics are note worthy. With great pleasure, we take pride in endorsing our association with ACE Group.

*G V Selvam. Vice - President , VIT University.*

We are extremely happy with the schedule of the project and its completion. The quality of man power and technical expertise of ACE Group is well acknowledged by our board of directors. We strongly recommend ACE Group to any client for the design and execution of projects without any hesitation.

*R. Vinod Kumar – General Manager, United motors & Heavy Equipments Pvt Ltd.*

We are very happy with the services of ACE Group. The design conceived by ACE Group has made us proud owners of this unique school campus, which is eco-friendly and merges well with local natural ambience of Ooty. We wish ACE Group all success and do recommend them for any large campus developments.

*Director ( Projects ) & Engineer-in-Chief – JSS Mahavidyapeeta.*



**ACE GROUP** is a specialised practice focussing on **EDUCATIONAL ARCHITECTURE**.

Our other areas of focus are **COMMERCIAL, INDUSTRIAL & RESIDENTIAL PROJECTS**

**EDUCATIONAL PROJECTS**

**COMMERCIAL PROJECTS**

**INDUSTRIAL PROJECTS**

**RESIDENTIAL PROJECTS**



# These classrooms have class

Catering to the special needs of children and teachers proved a winner for this architect

Turning a 40-acre campus on the city outskirts into a self-contained and eco-friendly group of school buildings, complete with Greco-Roman facades, was no easy task for Dinesh Verma. The project he managed for Indus International School also helped Dinesh Verma, Principal Architect of the Ace Group, win

award recently in Mumbai from a real estate journal. "A school has a distinct character and it had to be brought out in the buildings and even in the use of the open space and, like any good architect, we had meetings with the school's management to find out what they had in mind and then create suitable designs," Mr. Verma told *The Hindu*. To start with, there had to be tall columns and impressive fa-

• Classrooms designed in a multi-functional manner by architect Dinesh Verma.  
 • Furniture is not bolted to the floors and can be rearranged for group discussions.  
 • Windows open out to gardens and there is enough natural light and ventilation.  
 • Corridors made eight feet wide so that no student has to touch the walls and dirty them.

• Landscaping with paved walks between the playground and the classrooms ensures there is no dust during summer and no mud is carried indoors during the rains.  
 • The library and internet lounges have been designed to be converted into classrooms if needed.  
 • Washroom taps and basins within reach of children.

building a tennis court, swimming pool, tracks and a building for indoor games. "In a school, the different zones have activities and a central area for students can be used at specific times of the day. The school building and large kitchens and dining halls have to comfortably close to

each for considerations of safety and protection from weather. There has to be easy communication between the different buildings, too," Mr. Verma explains. "We made the corridors of classrooms or labs inevitably get sold by the hands of children passing by. "We made the corridors eight foot wide so that no student has to touch the walls," Mr. Verma said. Local stone was used mostly with white plastering on the walls. The landscaping with the paved walks between the playground and the classrooms ensures there is no dust during summer and no mud is carried indoors during the rains. The library and internet lounges have been designed to be converted into classrooms if and when needed.

The classrooms have been designed in a multi-functional manner. The furniture is not bolted to the floors. They can be rearranged for group discus-

sions or arranged in a circle to listen to a talk by visiting faculty. The windows open out to the gardens and there is enough natural light in any kind of weather. The walls of corridors between classrooms or labs inevitably get sold by the hands of children passing by. "We made the corridors eight foot wide so that no student has to touch the walls," Mr. Verma said.

Local stone was used mostly with white plastering on the walls. The landscaping with the paved walks between the playground and the classrooms ensures there is no dust during summer and no mud is carried indoors during the rains. The library and internet lounges have been designed to be converted into classrooms if and when needed.

Today's architects have to be technologists as well and abreast with the latest developments in the world in terms of

combining freshness in design with experience gained from previous projects. Another aspect of designing buildings, which he stresses, is versatility. "One should be versatile to such an extent that no one is able to recognise the designer by the building. One should not become type-cast." While he has designed high-tech high-rise buildings, which match the best in the West, others have used Indian architectural tradition. As in the case of the Global Academy of Technology in Bangalore, which has the columns, and arches with heritage buildings.

building technology, material, and design, Mr. Verma explained. "Architects need excellent managerial skills and be able to coordinate the building process with consultants and specialists connected with a project and have to constantly upgrade their own skills to match the requirements of the building industry," he said. His and the Ace Group's approach was to design a project as if it was for the

building technology, material, and design, Mr. Verma explained. "Architects need excellent managerial skills and be able to coordinate the building process with consultants and specialists connected with a project and have to constantly upgrade their own skills to match the requirements of the building industry," he said. His and the Ace Group's approach was to design a project as if it was for the

# Ace Group to focus on eco-friendly development

By Our Special Correspondent

**BANGALORE, MARCH 26.** When the first phase of Surya Towers, the facility for IT corporates near Electronic City, was inaugurated by the Chief Minister, S.M. Krishna, last month, it was one more milestone for the Ace Group of builders and developers, partners in the project and its Managing Director, Dinesh Verma.

"Our aim has always been to be innovative, combining technology with aesthetics and an eco-friendly approach to commercial property development," Mr. Verma told *The Hindu*. He knows what he is talking about, having designed buildings all over South India, from the Nilgiris to the Deccan Plateau, for the past 18 years. The group has also designed projects in Mumbai and Delhi though its focus is on the southern cities, especially Bangalore. Today's architects have to be technologists as well and abreast with the latest developments in the world in terms of



Dinesh Verma

building technology, material, and design, Mr. Verma explained. "Architects need excellent managerial skills and be able to coordinate the building process with consultants and specialists connected with a project and have to constantly upgrade their own skills to match the requirements of the building industry," he said. His and the Ace Group's approach was to design a project as if it was for the



Institutional architects are changing the look of the education system in India.

## DEEP EXCAVATION & GROUND WATER CONTROL



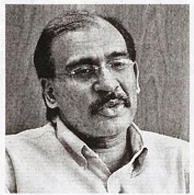
Back to Back Rain water, Solar energy, natural ventilation, etc.



# School architecture is about ventilation

Special Correspondent

**BANGALORE:** With a number of international schools coming up in and around Bangalore, "educational architecture" is becoming a specialised field, says this leading architect. Dinesh Verma, Managing Director of Ace Group, is an architect and past president of the Practising Architects' Association. The Indus International School and The International School, Bangalore, are two projects he is happy to have been associated with. "Such schools have academics from the U.K. or Australia as principals and demand standards comparable to the best school campuses in the world and so do parents paying hefty fees," Mr. Verma says.



Dinesh Verma  
 — PHOTO: K. GOPINATHAN

Each of the schools I have

ogy and not different f designs for city's many puses. At the same time, they want to be as eco-friendly as possible with provision for recycling sewerage. One school campus in Mysore has enough acreage to have a track built for teaching senior students safe driving. "The IT campuses have well-defined requirements and high specifications," Mr. Verma says. Many are multinational companies with facilities in the U.S. and Europe and obviously expect the same standards in Bangalore. What they demand is tied to the dynamic nature of the information technology industry itself — scalability. A company may want to shift to large premises or expand its facility without much disruption

# Making classrooms increasingly creative

TIMES NEWS NETWORK

**Bangalore:** Gone are the days when schools would remind people of drab classrooms or worn-out blackboards. Now schools are looking at creating an environment that not only enthralls students but gives room to showcase their creativity. For instance, it could be providing a separate space wall for children to scribble, natural light and ventilation, implementing rain water harvesting — all of which works well for both students and school managements. ACE Group Architects Pvt Ltd, which has designed over 50 school projects across the country, has successfully brought in these changes. The group was recently conferred the 'best design and projects in institutional architecture' by a Mumbai-based magazine. It specializes in design and projects. T



R Sridhar (left), Dinesh Verma and Satyaprasad of the ACE Group for best design and project architecture recently

## OUR RELENTLESS PURSUITS TO ACHIEVE INNOVATION & EXCELLENCE IN INSTITUTIONAL ARCHITECTURE HAS BEEN TESTIFIED BY TIME & THE MEDIA VIA WEB, PRINT, RADIO & TELEVISION

M A K E R S

CURVE... The... require... have mo... nical facilities... doors are to be a... d hurting them... corridor should... his helps curb c... e ample light... tanks, as it... ge 40 to 50 per... ed for a room... sit. Multiple ex... doors. Pillars should not occur... vision



Let's shake hands  
to a memorable  
partnership.



**Thank You**